

Circulation Research

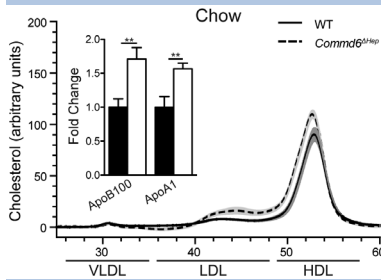
Volume 122 Number 12 June 8, 2018

★ **Featured Article**

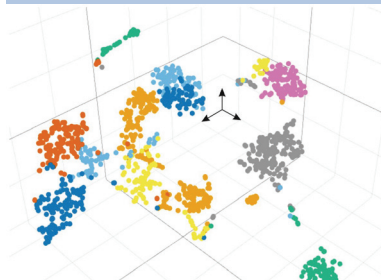
📄 Online supplementary information

🎬 Online movie files

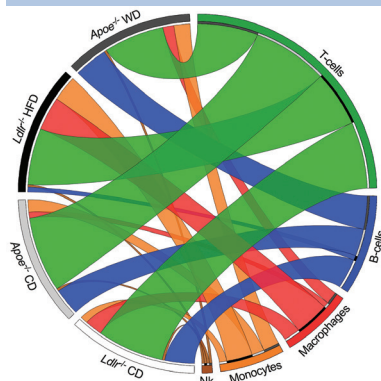
Available at <http://circres.ahajournals.org>



COMMD Proteins Regulate Plasma Lipid Levels
Fedoseienko *et al.* page 1648



scRNA-Seq of Aortic Macrophages in Atherosclerosis
Cochain *et al.* page 1661



Leukocyte Heterogeneity in Atherosclerosis
Winkels *et al.* page 1675

In This Issue 1625

Meet the First Authors 1626

Editorials

The CCC Complex COMMANDs Control of LDL Cholesterol Levels

Michael F. Keating, Anna C. Calkin 1629

First Giant Steps Toward a Cell Atlas of Atherosclerosis

Hanrui Zhang, Nancy R. Zhang, Mingyao Li, Muredach P. Reilly 1632

Immunity Comes to Play in the “Sex Paradox” of Pulmonary Arterial Hypertension

Mohammed S. Osman, Evangelos D. Michelakis 1635

Leaders in Cardiovascular Science

Alan R. Tall: The Downs and (Mostly) Ups of a Life in Science

Susan Ince 1638

Viewpoints

Obesity Paradox and Smoking Gun: A Mystery of Statistical Confounding?

Xi-Yong Yu, Ping Song, Ming-Hui Zou 1642

Cardiovascular Disease and Fine Particulate Matter: Lessons and Limitations of an Integrated Exposure–Response Approach

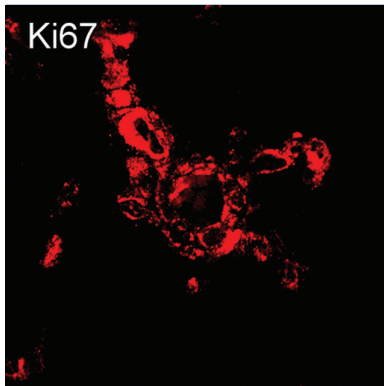
C. Arden Pope III, Aaron J. Cohen, Richard T. Burnett 1645

Molecular Medicine

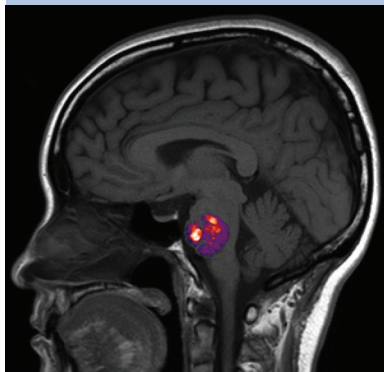
★ **The COMMD Family Regulates Plasma LDL Levels and Attenuates Atherosclerosis Through Stabilizing the CCC Complex in Endosomal LDLR Trafficking**

Alina Fedoseienko, Melinde Wijers, Justina C. Wolters, Daphne Dekker, Marieke Smit, Nicolette Huijkman, Niels Kloosterhuis, Helene Klug, Aloys Schepers, Ko Willems van Dijk, Johannes H.M. Levels, Daniel D. Billadeau, Marten H. Hofker, Jan van Deursen, Marit Westerterp, Ezra Burstein, Jan Albert Kuivenhoven, Bart van de Sluis 1648

CIRCULATION RESEARCH (ISSN 0009-7330 print / 1524-4571 online) is published semimonthly for 24 total issues a year by Wolters Kluwer Health, Inc. at 14700 Citicorp Drive, Bldg 3, Hagerstown, MD 21742. Business offices are located at Two Commerce Square, 2001 Market Street, Philadelphia, PA 19103. Production offices are located at 351 West Camden Street, Baltimore, MD 21201-2436. Individuals may subscribe for their personal use at the following rates for print subscriptions: \$225 for AHA/ASA Domestic and International Members (excluding General Membership level), or \$833 for domestic non-members and \$989 for international non-members. AHA membership information can be found online at professional.heart.org. Periodicals postage paid at Hagerstown, MD, and additional mailing offices. POSTMASTER: Send address changes to *Circulation Research*, American Heart Association, Wolters Kluwer Health, Inc., PO Box 1610, Hagerstown, MD 21740.



Ki67
**Dominant Treg Effects
 in Females**
 Tamosiuniene *et al.* page 1689



**Plasma Predictors in Human
 CCM Disease**
 Girard *et al.* page 1716

★ Single-Cell RNA-Seq Reveals the Transcriptional Landscape and Heterogeneity of Aortic Macrophages in Murine Atherosclerosis

Clément Cochain, Ehsan Vafadarnejad, Panagiota Arampatzi, Jaroslav Pelisek, Holger Winkels, Klaus Ley, Dennis Wolf, Antoine-Emmanuel Saliba, Alma Zernecke 1661

★ Atlas of the Immune Cell Repertoire in Mouse Atherosclerosis Defined by Single-Cell RNA-Sequencing and Mass Cytometry

Holger Winkels, Erik Ehinger, Melanie Vassallo, Konrad Buscher, Huy Q. Dinh, Kouji Kobiyama, Anouk A.J. Hamers, Clément Cochain, Ehsan Vafadarnejad, Antoine-Emmanuel Saliba, Alma Zernecke, Akula Bala Pramod, Amlan K. Ghosh, Nathaly Anto Michel, Natalie Hoppe, Ingo Hilgendorf, Andreas Zirlik, Catherine C. Hedrick, Klaus Ley, Dennis Wolf 1675

Cellular Biology

★ Dominant Role for Regulatory T Cells in Protecting Females Against Pulmonary Hypertension

Rasa Tamosiuniene, Olga Manouvakhova, Paul Mesange, Toshie Saito, Jin Qian, Mrinmoy Sanyal, Yu-Chun Lin, Linh P. Nguyen, Amir Luria, Allen B. Tu, Joshua M. Sante, Marlene Rabinovitch, Desmond J. Fitzgerald, Brian B. Graham, Aida Habtezion, Norbert F. Voelkel, Laure Aurelian, Mark R. Nicolls 1689

Clinical Track

Rationale and Design of the CONCERT-HF Trial (Combination of Mesenchymal and c-kit⁺ Cardiac Stem Cells As Regenerative Therapy for Heart Failure)

Roberto Bolli, Joshua M. Hare, Keith L. March, Carl J. Pepine, James T. Willerson, Emerson C. Perin, Phillip C. Yang, Timothy D. Henry, Jay H. Traverse, Raul D. Mitrani, Aisha Khan, Ivonne Hernandez-Schulman, Doris A. Taylor, Darcy L. DiFede, João A.C. Lima, Atul Chugh, John Loughran, Rachel W. Vojvodic, Shelly L. Sayre, Judy Bettencourt, Michelle Cohen, Lem Moyé, Ray F. Ebert, Robert D. Simari; for the Cardiovascular Cell Therapy Research Network (CCTRN) 1703

Plasma Biomarkers of Inflammation and Angiogenesis Predict Cerebral Cavernous Malformation Symptomatic Hemorrhage or Lesional Growth

Romuald Girard, Hussein A. Zeineddine, Janne Koskimäki, Maged D. Fam, Ying Cao, Changbin Shi, Thomas Moore, Rhonda Lightle, Agnieszka Stadnik, Kiranj Chaudagar, Sean Polster, Robert Shenkar, Ryan Duggan, David Leclerc, Kevin J. Whitehead, Dean Y. Li, Issam A. Awad **Short Communication** 1716

Reviews

NLRP3 Inflammasome and the IL-1 Pathway in Atherosclerosis

Alena Grebe, Florian Hoss, Eicke Latz 1722

Sleep Apnea and Cardiovascular Disease: An Enigmatic Risk Factor

John S. Floras 1741

Letter to the Editor

Letter by Rupp and Jux Regarding Article, “Mechanisms of Cardiac Repair and Regeneration”

Stefan Rupp, Christian Jux **Online Only** e90

“In This Issue” Anthology

Circulation Research “In This Issue” Anthology

Ruth Williams, The Editors **Online Only** e92

In April 2018, the average time from submission to first decision for all original research papers submitted to *Circulation Research* was 13.4 days.

On the Cover: The cover image illustrates murine aortic leukocyte heterogeneity in 20-week-old *ApoE*^{-/-} mice. Using a 35-marker pan-leukocyte mass cytometry (CyTOF) antibody panel, and a tSNE-based cluster detection algorithm, 23 leukocyte clusters were identified above a detection threshold. Most of these leukocyte populations, including T cells, B cells, and myeloid cells, show dynamic regulation between mice fed chow diet or a Western diet. The article within shows the unexpected complexity of the immune cell landscape in atherosclerosis using multiple omics approaches, demonstrates the association of individual murine aortic leukocyte population gene signatures with risk of developing secondary ischemic event in patients, and describes the existence of several novel leukocyte subsets as a launching point for future research. See related article, page 1675.

Circulation Research

JOURNAL OF THE AMERICAN HEART ASSOCIATION



122 (12)

Circ Res. 2018;122:e90-1764

Circulation Research is published by the American Heart Association, 7272 Greenville Avenue, Dallas, TX 75231
Copyright © 2018 American Heart Association, Inc. All rights reserved.

Print ISSN: 0009-7330. Online ISSN: 1524-4571

The online version of this article, along with updated information and services, is located on the
World Wide Web at:

<http://circres.ahajournals.org/content/122/12>

Permissions: Requests for permissions to reproduce figures, tables, or portions of articles originally published in *Circulation Research* can be obtained via RightsLink, a service of the Copyright Clearance Center, not the Editorial Office. Once the online version of the published article for which permission is being requested is located, click Request Permissions in the middle column of the Web page under Services. Further information about this process is available in the [Permissions and Rights Question and Answer](#) document.

Reprints: Information about reprints can be found online at:
<http://www.lww.com/reprints>

Subscriptions: Information about subscribing to *Circulation Research* is online at:
<http://circres.ahajournals.org/subscriptions/>