

Circulation Research

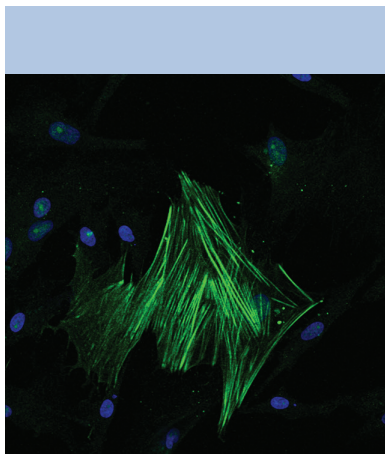
Volume 122 Number 8 April 13, 2018

★ **Featured Article**

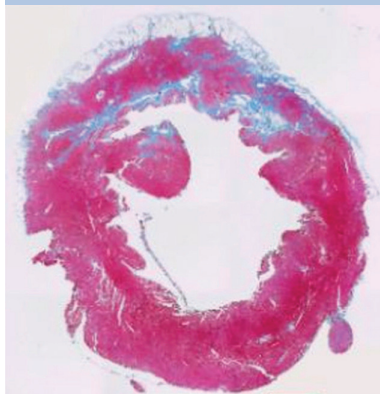
📄 Online supplementary information

🎬 Online movie files

Available at <http://circres.ahajournals.org>



Role of ER Protein TXNDC5 in Cardiac Fibrosis
Shih *et al.* page 1052



allo Muse

Muse Cells Repair the Acute MI
Yamada *et al.* page 1069

In This Issue 1033

Meet the First Authors 1034

Editorials

Does a Newly Characterized Cell From the Bone Marrow Repair the Heart After Acute Myocardial Infarction?
Steven R. Houser 1036

It's the Metabolism That Makes Macrophages Detectable in the Magnetic Resonance Scanner: Immune Cell Detection by Hyperpolarized ¹³C Magnetic Resonance Imaging
Wolfgang R. Bauer, Constantin Lapa, Theresa Reiter 1039

Infarct Size Reduction by Targeting Ischemic Injury: Back to Square One
Xavier Rossello, Borja Ibanez 1041

Promising Young Investigators

Rajat Gupta: A Scientist in Doctor's Clothing
Ruth Williams 1044

Viewpoints

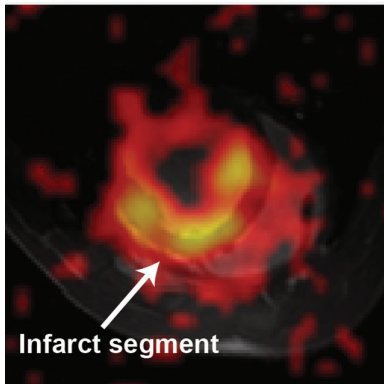
Liberation From the P Value's Tyranny
Lem Moyé, Michelle Cohen 1046

Critical Evaluation of Data Requires Rigorous but Broadly Based Statistical Inference
Nancy J. Cox, Jennifer E. Below 1049

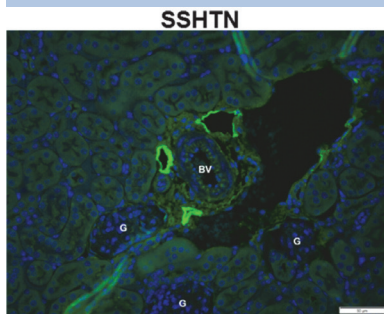
Molecular Medicine

Endoplasmic Reticulum Protein TXNDC5 Augments Myocardial Fibrosis by Facilitating Extracellular Matrix Protein Folding and Redox-Sensitive Cardiac Fibroblast Activation
Ying-Chun Shih, Chao-Ling Chen, Yan Zhang, Rebecca L. Mellor, Evelyn M. Kanter, Yun Fang, Hua-Chi Wang, Chen-Ting Hung, Jing-Yi Nong, Hui-Ju Chen, Tzu-Han Lee, Yi-Shuan Tseng, Chiung-Nien Chen, Chau-Chung Wu, Shuei-Liong Lin, Kathryn A. Yamada, Jeanne M. Nerbonne, Kai-Chien Yang 1052

CIRCULATION RESEARCH (ISSN 0009-7330 print / 1524-4571 online) is published semimonthly for 24 total issues a year by Wolters Kluwer Health, Inc. at 14700 Citicorp Drive, Bldg 3, Hagerstown, MD 21742. Business offices are located at Two Commerce Square, 2001 Market Street, Philadelphia, PA 19103. Production offices are located at 351 West Camden Street, Baltimore, MD 21201-2436. Individuals may subscribe for their personal use at the following rates for print subscriptions: \$225 for AHA/ASA Domestic and International Members (excluding General Membership level), or \$833 for domestic non-members and \$989 for international non-members. AHA membership information can be found online at professional.heart.org. Periodicals postage paid at Hagerstown, MD, and additional mailing offices. POSTMASTER: Send address changes to *Circulation Research*, American Heart Association, Wolters Kluwer Health, Inc., PO Box 1610, Hagerstown, MD 21740.



Hyperpolarized MRI of Cardiac Inflammation
Lewis *et al.* page 1084



Renal Lymphatics and Hypertension
Lopez Gelston *et al.* page 1094



ST-Segment Elevation and Cardioprotection
Kleinbongard *et al.* page 1102

Integrative Physiology

S1P-S1PR2 Axis Mediates Homing of Muse Cells Into Damaged Heart for Long-Lasting Tissue Repair and Functional Recovery After Acute Myocardial Infarction

Yoshihisa Yamada, Shohei Wakao, Yoshihiro Kushida, Shingo Minatoguchi, Atsushi Mikami, Kenshi Higashi, Shinya Baba, Taeko Shigemoto, Yasumasa Kuroda, Hiromitsu Kanamori, Mohamad Amin, Masanori Kawasaki, Kazuhiko Nishigaki, Masato Taoka, Toshiaki Isobe, Chisako Muramatsu, Mari Dezawa, Shinya Minatoguchi 1069

★ Noninvasive Immunometabolic Cardiac Inflammation Imaging Using Hyperpolarized Magnetic Resonance

Andrew J.M. Lewis, Jack J. Miller, Angus Z. Lau, Mary K. Curtis, Oliver J. Rider, Robin P. Choudhury, Stefan Neubauer, Charles H. Cunningham, Carolyn A. Carr, Damian J. Tyler **OPEN** 1084

★ Enhancing Renal Lymphatic Expansion Prevents Hypertension in Mice

Catalina A. Lopez Gelston, Dakshnapriya Balasubramanian, Gabriella R. Abouelkheir, Alexandra H. Lopez, Kayla R. Hudson, Eric R. Johnson, Mariappan Muthuchamy, Brett M. Mitchell, Joseph M. Rutkowski 1094

★ Reflection of Cardioprotection by Remote Ischemic Preconditioning in Attenuated ST-Segment Elevation During Ongoing Coronary Occlusion in Pigs: Evidence for Cardioprotection From Ischemic Injury

Petra Kleinbongard, Georgios Amanakis, Andreas Skyschally, Gerd Heusch **Short Communication** 1102

Clinical Track

★ Hypertrophy Regression With N-Acetylcysteine in Hypertrophic Cardiomyopathy (HALT-HCM): A Randomized, Placebo-Controlled, Double-Blind Pilot Study

Ali J. Marian, Yanli Tan, Lili Li, Jeffrey Chang, Petros Syrris, Manouchehr Hessabi, Mohammad H. Rahbar, James T. Willerson, Benjamin Y. Cheong, Chia-Ying Liu, Neal S. Kleiman, David A. Bluemke, Sherif F. Nagueh 1109

Reviews

Is Optimism Associated With Healthier Cardiovascular-Related Behavior? Meta-Analyses of 3 Health Behaviors

Julia K. Boehm, Ying Chen, Hayami Koga, Maya B. Mathur, Loryana L. Vie, Laura D. Kubzansky 1119

The Vasculature in Prediabetes

David H. Wasserman, Thomas J. Wang, Nancy J. Brown 1135

Mechanisms of Cardiac Repair and Regeneration

Kathleen M. Broughton, Bingyan J. Wang, Fareheh Firouzi, Farid Khalafalla, Stefanie Dimmeler, Francisco Fernandez-Aviles, Mark A. Sussman 1151

Letters to the Editor

Letter by Scarabin-Carré and Scarabin Regarding Article, “Associations of Endogenous Estradiol and Testosterone Levels With Plaque Composition and Risk of Stroke in Subjects With Carotid Atherosclerosis”

Valérie Scarabin-Carré, Pierre-Yves Scarabin **Online Only** e67

Response by Glisic et al to Letter Regarding Article, “Associations of Endogenous Estradiol and Testosterone Levels With Plaque Composition and Risk of Stroke in Subjects With Carotid Atherosclerosis” <i>Marija Glisic, Oscar H. Franco, Taulant Muka</i> Online Only	e69
Letter by De Meyer Regarding Article, “Short Leukocyte Telomere Length Precedes Clinical Expression of Atherosclerosis: The Blood-and-Muscle Model” <i>Tim De Meyer</i> Online Only	e71
Response by Benetos et al to Letter Regarding Article, “Short Leukocyte Telomere Length Precedes Clinical Expression of Atherosclerosis: The Blood-and-Muscle Model” <i>Athanase Benetos, Jeremy D. Kark, Simon Toupance, Simon Verhulst, Abraham Aviv</i> Online Only	e73

In February 2018, the average time from submission to first decision for all original research papers submitted to *Circulation Research* was 12 days.

On the Cover: LYVE-1 staining (green) of lymphatic vessels located around an interlobular artery in the kidney cortex of a hypertensive mouse. See related article, page 1094.